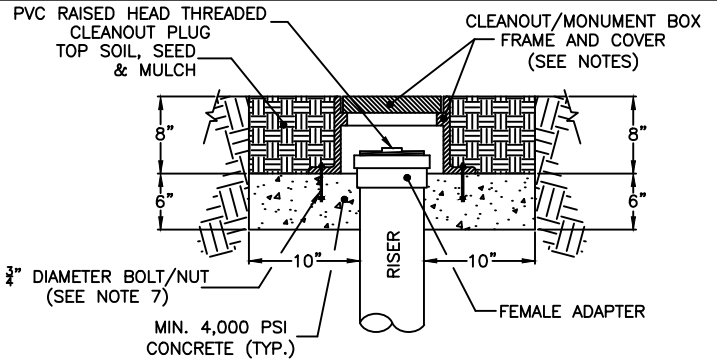
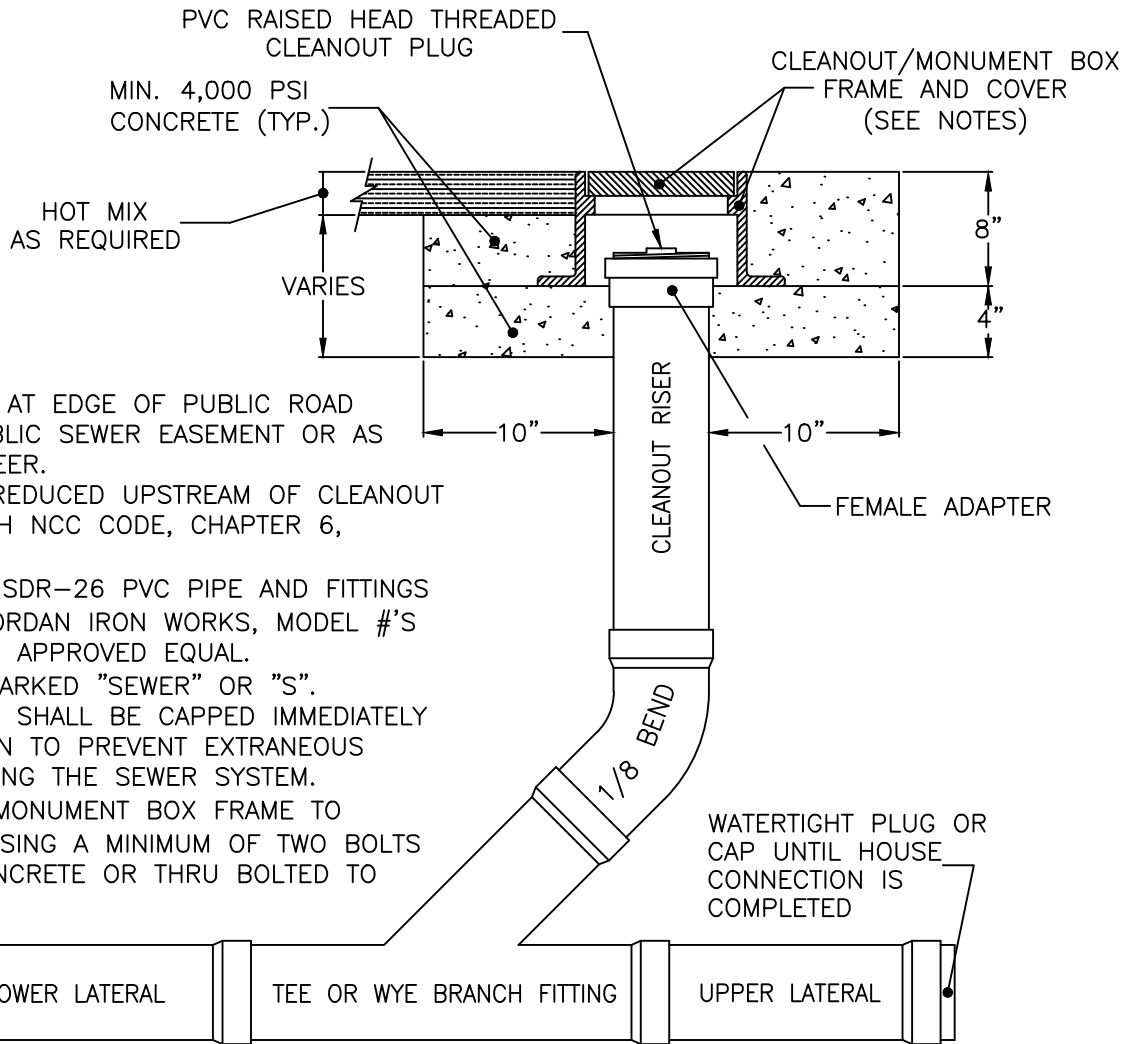


LATERAL CLEANOUT IN
NON-PAVED SURFACES
W/HDPE DONUT
OPTION 1



LATERAL CLEANOUT IN
NON-PAVED SURFACES
W/CONCRETE DONUT
OPTION 2



LATERAL CLEANOUT
IN PAVED SURFACES

NOTES:

1. CLEANOUTS PLACED AT EDGE OF PUBLIC ROAD RIGHT-OF-WAY, PUBLIC SEWER EASEMENT OR AS DIRECTED BY ENGINEER.
2. PIPE DIA. MAY BE REDUCED UPSTREAM OF CLEANOUT IN ACCORDANCE WITH NCC CODE, CHAPTER 6, ARTICLE 7.
3. MATERIAL: 6" DIA. SDR-26 PVC PIPE AND FITTINGS
4. CASTINGS: EAST JORDAN IRON WORKS, MODEL #'S 1574A & 1574Z OR APPROVED EQUAL.
5. COVER SHALL BE MARKED "SEWER" OR "S".
6. LATERAL CLEANOUTS SHALL BE CAPPED IMMEDIATELY AFTER CONSTRUCTION TO PREVENT EXTRANEOUS WATER FROM ENTERING THE SEWER SYSTEM.
7. FASTEN CLEANOUT/MONUMENT BOX FRAME TO CONCRETE/DONUT USING A MINIMUM OF TWO BOLTS EMBEDDED INTO CONCRETE OR THRU BOLTED TO DONUT.

SS-LAT-2



NEW CASTLE COUNTY, DELAWARE
DEPARTMENT OF
PUBLIC WORKS

LATERAL CLEANOUT
DETAIL (NTS)

THIS DETAIL IS SUBJECT TO REVISION. VERIFY WITH
NEW CASTLE COUNTY, DEPARTMENT OF PUBLIC WORKS,
CORRECTNESS OF DETAIL PRIOR TO IMPLEMENTATION.

NCC PLATE NO.
SS-LAT-2

LAST REVISED: 6/8/2023